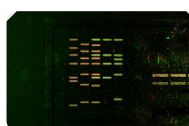
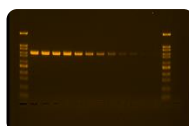


KETA MLX II



ALL IN ONE SYSTEM

Software-controlled multi-purpose imaging system for versatile applications



SAMPLE TRAY AUTOMATIC IDENTIFICATION

Automatically detect Sample Tray ID with preset protocols to provide the correct image capture condition



SUPERIOR SENSITIVITY

Reduce the waiting time for your faint signal to appear
Guarantee the lowest 2.4 pg level.



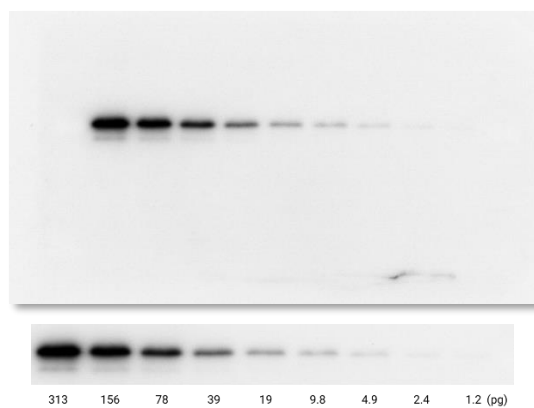
EASY IMAGE EXPORT

Export your images in a batch to your USB memory sticker
Or through Wi-Fi instantly

KETA MLX II is a High-End multi-purpose research grade imaging system, ideal for molecular biology core facility. It consists of a superior 16-bit, 9.1 Megapixels and Peltier cooled camera element, software-controlled lens, seven-position motorized filter wheel come with a high transparent emission filter. Large visual area, MC 300 LED light set covers the wavelength range from visible to NIR as Epi-light source, low background 302 nm UV transilluminator. Inbuilt 24V power supply for green/white light sample tray, UV radiation safety interlock darkroom, 46 mm WK 301 to WK 305 emission filter as standard, energy saving mode provides camera turn off automatically while idling over than 15 minutes. Pre-set optimum condition, method create and edit capability.

KETA MLX II with inbuilt SBC and 12" touch panel LCD, exactly the editable software-controlled imaging system. It's not only available for traditional gel documentation but also equipped with Stain-Free gel UV activation capability. Blot detect support both Chemiluminescence and Fluorescence. The high Signal to Noise ratio of 9.1 megapixel 1 inch chip size, Peltier cooled camera cooling down temperature to 40°C below ambient makes MLX II the most sensitive and high resolution system in the market.

Code recognizer enables MLX II automatically identify sample tray to drive the system with the specific emission filter, excitation light source, iris, focus and all preset parameter to get the best image by one click. The system also supports method create and recall for multiple users.



Two-fold dilution series of purified human transferrin from 625 pg to 2.4 pg

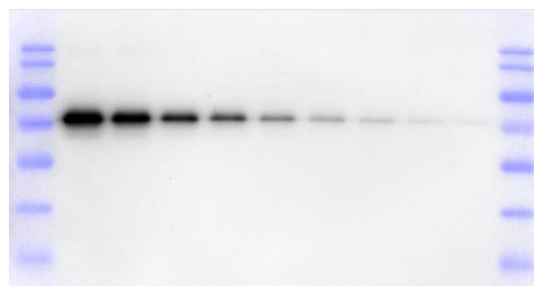


Image blending with the marker image with Auto Coloring

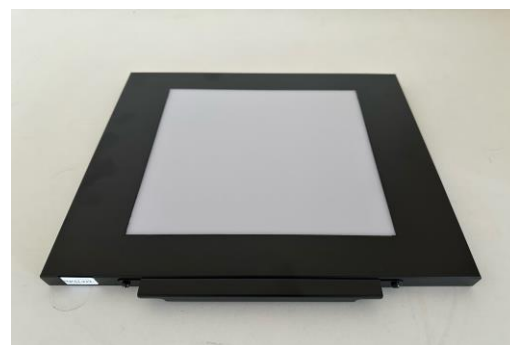
MC 300 is the new LED Epi light source module for fluorescence western blot workflow. It covers wavelength from visible range 400nm to 640nm, with optional NIR 780nm to 800nm, coupled with narrow band emission filter delivering excellent result with all kinds of commercial fluorescent dyes.

Magic MP software package is dedicated for KETA MLX II which integrated with both Magic 1D and Magic Chemi software.

Magic 1D software package with genius capture mode CGM allows user to preset, save and recall capture parameter by one click. Maximum 30 seconds exposure time is available for single capture. The GCM function helps operator to get excellent image anytime.

Perfect darkroom calibration, camera shading correction, distortion correction, flat frame correction, adjustable brightness / contrast /, image profiling / blending, background defining, provides whole visual area imaging at the same level. In addition, four analysis functions, Molecular Weight and Mass Determination, Colony Counting, Microtiter Plate Assay and Spot Density Calculation are also included.

Just one click auto capture for chemiluminescent signal capture, functions include live / preview viewing, auto capture / auto quant capture / professional capture mode. DynaView, Batch Capture and Programming capture are included in Professional mode. DynaView is continuously accumulate signal emitted from the membrane and display with time sequence. Batch Capture function is to simulate the X-ray film exposure protocols to provide continuous image capture with different exposure time. Programming capture detects the signal with 10 sets of exposure time with pause function. Circle select interested region and recapture to get better result. Binning function with 1x1, 2x2, 4x4, and 8x8 augment the sensitivity. Interrupt warning stop and warn the user while capturing been disturbed. Auto-save function allows user to export with most common file formats such as PCX, TGA, DFN, PNG, IMG, TIFF, BMP, JPG, GIF, etc. at once.



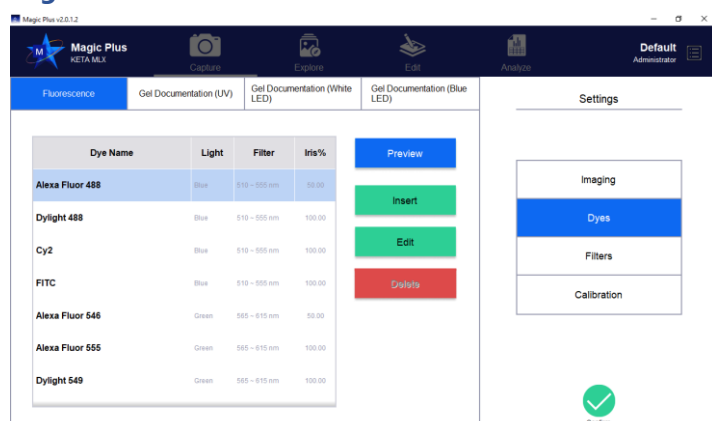
UV/Green/White light sample Tray



Fluorescence image Alexa Fluor 488



Magic MP software



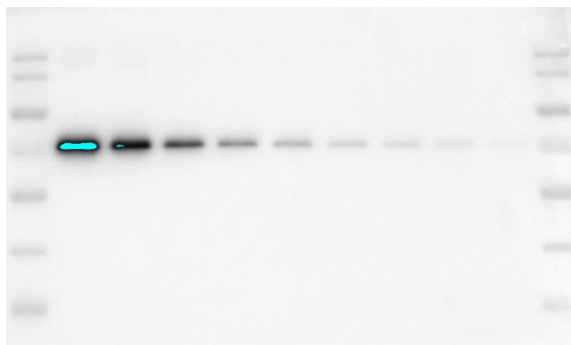
Select specific dye



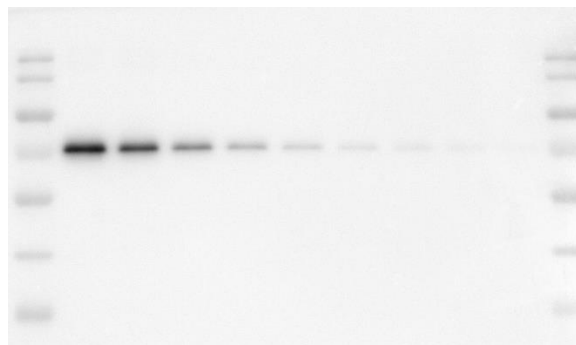
Compare images

Auto capture mode

Select the Auto Capture mode system automatic predict the optimal exposure time get perfect result both save time and never lost any signal. Auto Quant mode same as above the image capture will stop at anyone pixel saturated help operator fast for quantification of protein.



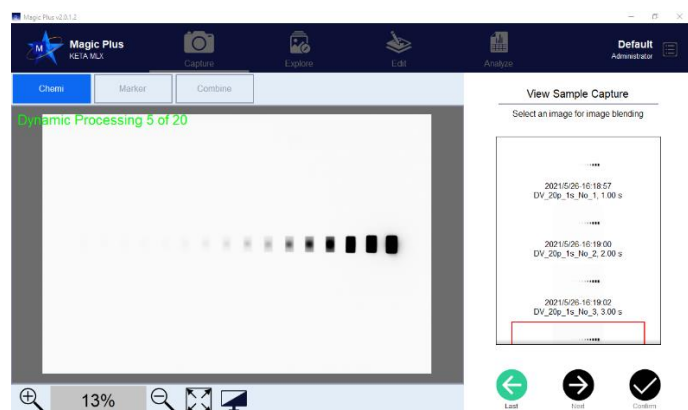
Auto Capture



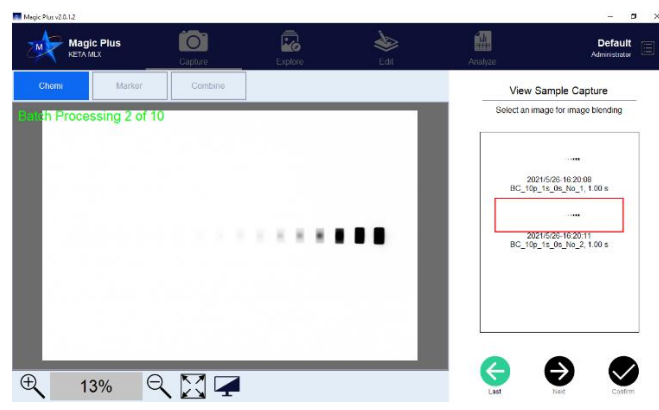
Auto Quant Capture

Professional mode

DynaView and Batch capture for signal cumulate and X-ray film simulation



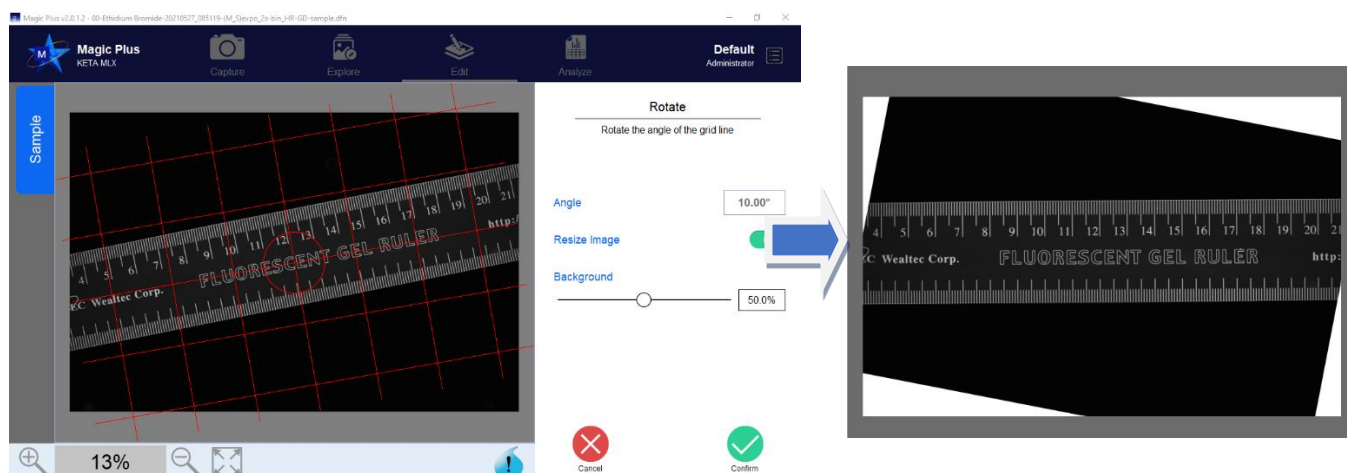
DynaView



Batch Capture

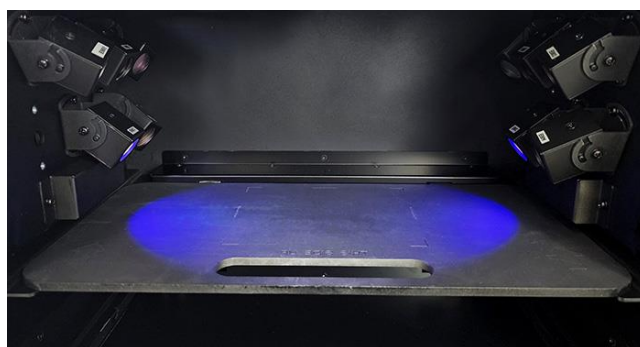
Image rotation

Non-mechanical image rotation capability 0-360 degree enables user to optimize the image with the desired position for professional report export



MC 300 supports versatile fluorescent western blot

MC 300 Epi light set includes two sets of full-spectrum LED covering wavelength from 400nm to 640nm (optional NIR 780nm to 800nm) for all fluorescent dye excitation on western blot application. Operator choose either the dye or the excitation wavelength, the MLX will automatically turn on the LED and drive the Emission filter to correct position by preset program without additional steps.



MC 300 light source for Alexa Fluor 488 dye

Motorized Filter Wheel

Software controlled seven 46mm filter position motorized filter wheel remains flexibility for chemiluminescent Imaging and adapted various emission filters for fluorescent western blot Imaging.



Seven position filter wheels

Image Analysis Function

Magic MP software provides powerful tool for user easily compare their images with previous images, enhance the images with the editing tools, and select the best images for quantification analysis.

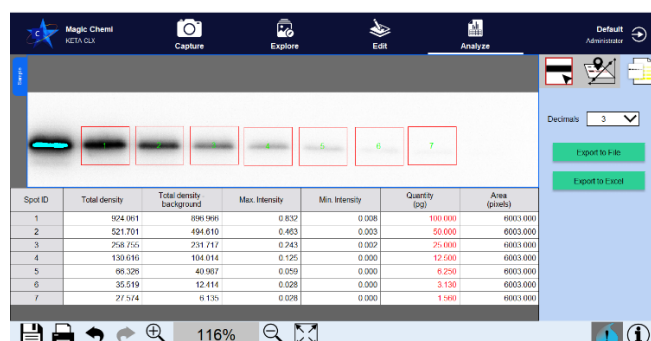
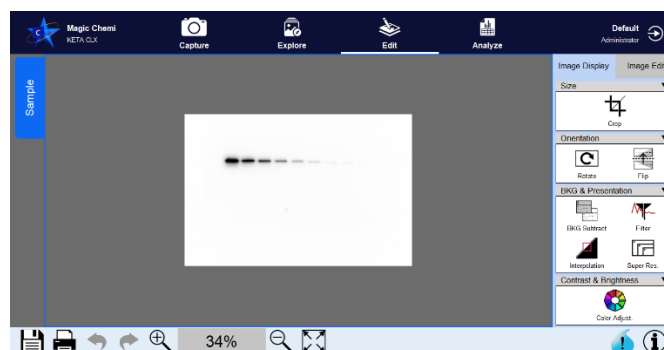


Image Edit and Display

Magic MP possess the traceable image enhancement functions which include: color/ brightness/ contrast adjustment, image profiling or blending, background defining, annotations on the image or masked layer, 3D color display, X-axis comparison, smiling gels correction, conversion, interpolate, Deconvolution, Super Resolution, flipping, rotation and distance measurement.



A

Professional Reporting

Institute: Wealtec Bioscience co., Ltd.
Laboratory: Research and Development

Creator:
Print date: 2020/12/23 14:39:12

Institute: Wealtec Bioscience Co., Ltd.
Laboratory: Research and Development

Creator:
Print date: 2021/01/29 10:12:18

WEALTEC KETA CLX Chemiluminescent Imaging System


Imaging System Information

| | | | |
|---------------|---------------|------------------|-------------|
| System | KETA CLX | Software | Magic Chemi |
| Serial Number | WC2012L03C2.1 | Software Version | 2.0.0.4 |

Image Information

| | |
|--------------------|---|
| File Name | Normal-Auto(1)-20201222.tif |
| Image Depth | 16-bit |
| Pixel Count | 521,381 |
| Image Display | Inverted |
| Image Size (pixel) | 1477 x 353 |
| Capture Method | Auto Exposure |
| Binning | Normal |
| Exposure Time | 62.640 sec |
| File Location | C:\Users\jms\Desktop\Demo Archive\RD Good WB62.Spg_X300.tif |

Image Name: Normal-Auto(1)-20201222



Area Density Analysis Report

| Spot ID | Total density | Total density - background | Max. Intensity | Min. Intensity | Quantity (%) | Area (pixels) |
|---------|---------------|----------------------------|----------------|----------------|--------------|---------------|
| 1 | 1875.408 | 1574.752 | 0.801 | 0.019 | 100.000 | 9306 |
| 2 | 911.509 | 810.853 | 0.335 | 0.012 | 54.405 | 9306 |
| 3 | 428.458 | 327.844 | 0.146 | 0.006 | 25.573 | 9306 |
| 4 | 224.216 | 124.230 | 0.071 | 0.004 | 13.383 | 9306 |
| 5 | 158.724 | 60.447 | 0.048 | 0.004 | 9.474 | 9306 |
| 6 | 117.592 | 23.057 | 0.154 | 0.003 | 7.019 | 9306 |
| 7 | 92.648 | 5.494 | 0.021 | 0.001 | 5.530 | 9306 |

Specification

| Model | KETA MLX II |
|------------------------|---|
| Camera depth | 16bit |
| Dynamic Range | >4.0 |
| Operation temperature | 0-40°C |
| Chip size | 1" |
| Resolution | 9.1M pixels |
| communication | Wi-Fi, USB |
| Binning | 1X1,2X2, 4X4, 8X8 |
| Pixel Size | 2.4um x 2.4um |
| Cooling | Peltier, 40°C below ambient |
| Motorized Lens | F0.95, focal length |
| Filter Wheel | 46mm, seven-position |
| Internal light source | MC 300 / 400nm to 640nm, optional NIR 780nm-800nm |
| UV-transilluminator | MD-20S 302nm |
| Tans-light Sample Tray | Green & White light, 20 x20cm |
| Sample Tray | White / Black, 20 x 20cm |
| Software | Magic MP |
| OS system | MS Windows 11 |
| Physical dimensions | 400 x 465 x 690mm (W x D x H) |
| Weight | 30kg |
| Power | 100 – 240V, 50 – 60Hz, 300W |

Optional

| | |
|-----------------------|---------------------------------|
| External Touch Screen | 20" LCD Screen with touch panel |
| Thermal printer | Digital |
| Laser printer | Color Laser Printer |

Filter Selection Guide

| Filter Type | Em (nm) | Commercial fluorescence dye |
|-------------|---------|--|
| WK 301 | 568-617 | Coomassie Blue, SYBR Green, SYBR Gold, SYPRO Ruby, SYPRO Orange Alexa Fluor 546, Alexa Fluor Plus 555 |
| WK 302 | 508-537 | Alexa Fluor 488, Alexa Fluor Plus 488 |
| WK 303 | 675-720 | Alexa Fluor 647, Alexa Fluor Plus 647 |
| WK 304 | 710-730 | Alexa Fluor 680, Alexa Fluor Plus 680 |
| WK 305 | 800-850 | Alexa Fluor 790, Alexa Fluor Plus 800 |

Ordering Information

| Catalog Number | Description |
|----------------|---|
| 1150053 | KETA MLX II complete include main body with 12.1" LED touch screen, SBC with 500G SSD, Wi-Fi, 5 USB port, Ethernet, Win11, WK 301 to 305 filter one each, one each white and black sample tray for membrane, MC 300 Epi light set as standard, coded green/white light transilluminator, MD-20S 302nm UV transilluminator, built in 24V power for coded trans-light sample tray, a set of keyboard and mouse, 100-240V, 50/60Hz |
| 1153039 | Magic MP software for KETA MLX II, single user only |
| 1153040 | Magic MP software for KETA MLX II, three user keys |
| 1151271 | Trans Green light transilluminator for MLX II |
| 1151272 | Trans White light transilluminator for MLX II |
| 1151273 | Trans Blue light transilluminator for MLX II |
| 1151311 | Coded Black sample tray for KETA MLX II |
| 1151312 | Coded White sample tray for KETA MLXII |
| 1151221 | WK 301 emission filter 568-617nm, 46 mm |
| 1151222 | WK 302 emission filter 508-537nm, 46 mm |
| 1151223 | WK 303 emission filter 675-720 nm, 46 mm |
| 1151224 | WK 304 emission filter 710-730 nm, 46 mm |
| 1151225 | WK 305 emission filter 800-850 nm, 46 mm |
| 1146002 | UV radiation block cover for gel excision |
| 1151261 | MD-20S 302nm UV transilluminator for KETA MLX II |
| 1151263 | HD-20S 365nm UV transilluminator for KETA MLX II |
| 1151265 | MD-20DS 302/365nm dual wavelength UV transilluminator for KETA MLX II |
| 1155032 | External 20" LCD with touch panel |
| Option | |
| 1146003 | Digital thermal printer |
| 1147007 | Printer paper for thermal printer 5 rolls/pack |
| 1147008 | Color laser printer |



Wealtec Bioscience Co., Ltd.
27F., No.29-1, Sec. 2, Zhongzheng E. Rd., Danshui Dist.,
New Taipei City 251, Taiwan
Tel: +886-2-8809-8587 Fax: +886-2-8809-8589
E-Mail: sales@wealtec.com

<http://www.wealtec.com>

No.0527MLX01©2024Wealtec Corp

